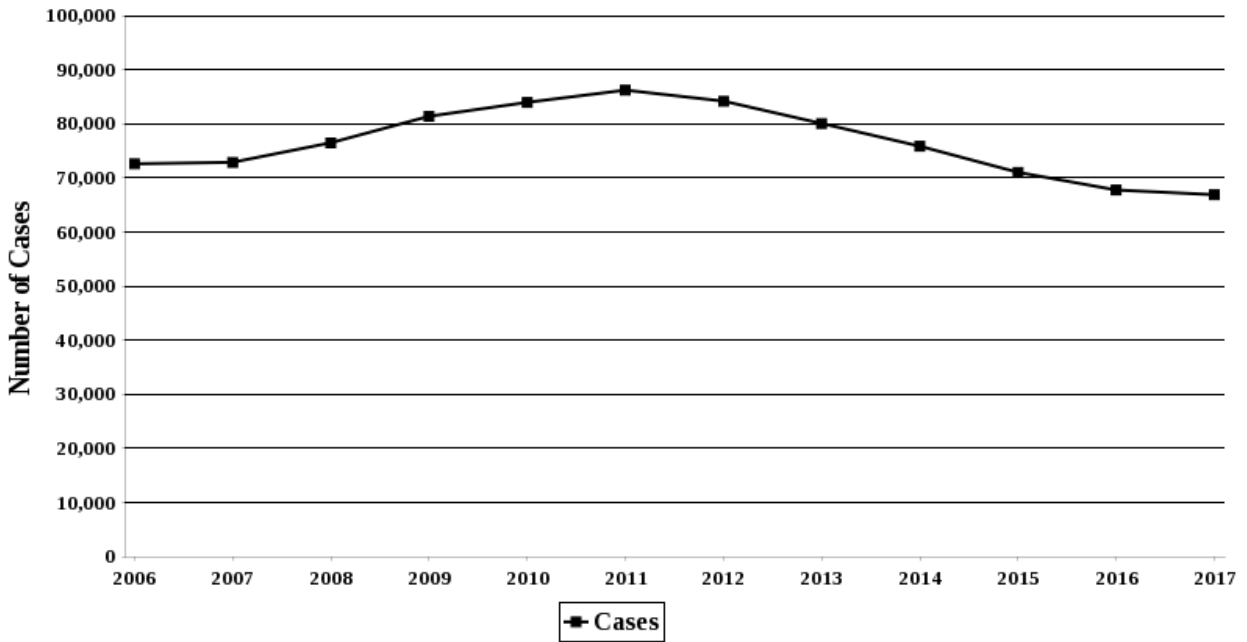


NUMBER OF CASES OVER TIME¹

Fiscal Years: 2006-2017

D.C. Circuit, 1st Circuit, 2nd Circuit, 3rd Circuit, 4th Circuit, 5th Circuit, 6th Circuit, 7th Circuit, 8th Circuit, 9th Circuit, 10th Circuit, 11th Circuit



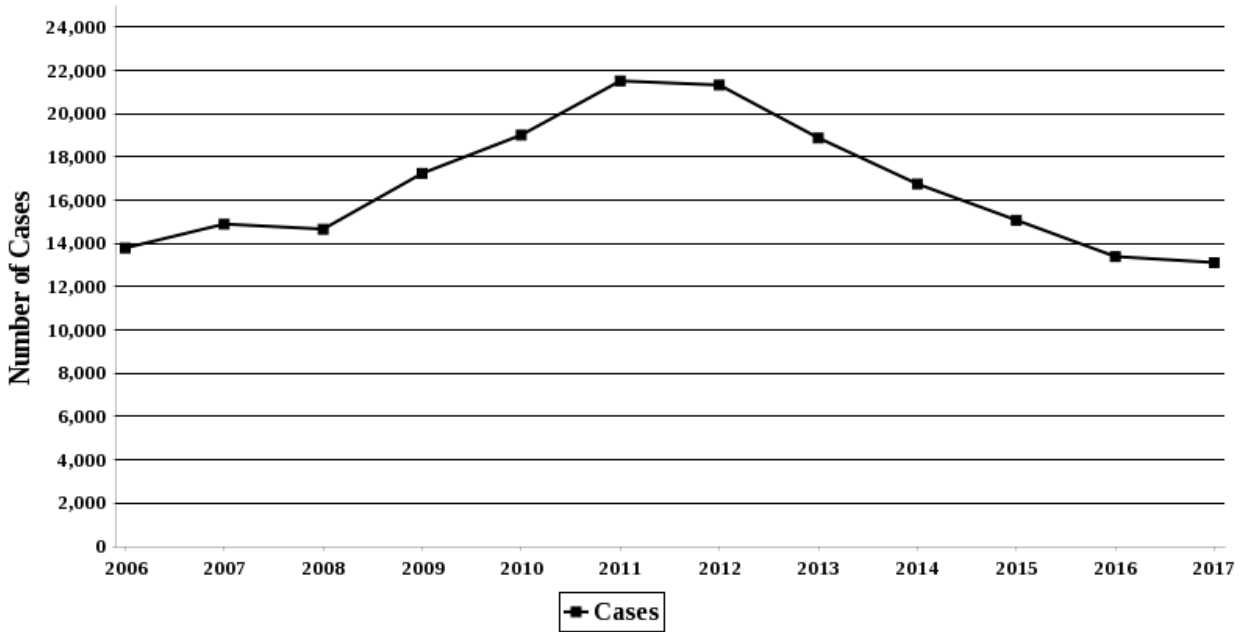
¹ Descriptions of variables used in this figure are provided in [Appendix A](#).

SOURCE: This was produced using the U.S. Sentencing Commission's Interactive Sourcebook (<https://isb.uscc.gov>) using the Commission's fiscal year 2006-2017 Datafiles, USSCFY2006-USSCFY2017.

NUMBER OF CASES OVER TIME¹

Fiscal Years: 2006-2017

9th Circuit



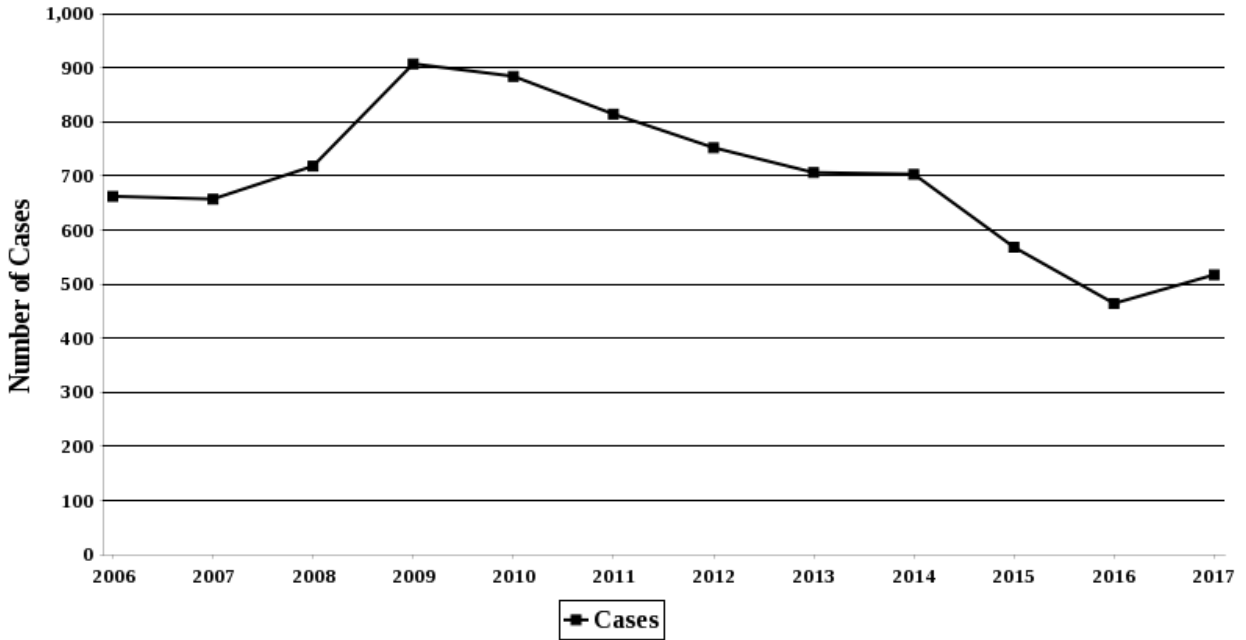
¹ Descriptions of variables used in this figure are provided in [Appendix A](#).

SOURCE: This was produced using the U.S. Sentencing Commission's Interactive Sourcebook (<https://isb.uscc.gov>) using the Commission's fiscal year 2006-2017 Datafiles, USSCFY2006-USSCFY2017.

NUMBER OF CASES OVER TIME¹

Fiscal Years: 2006-2017

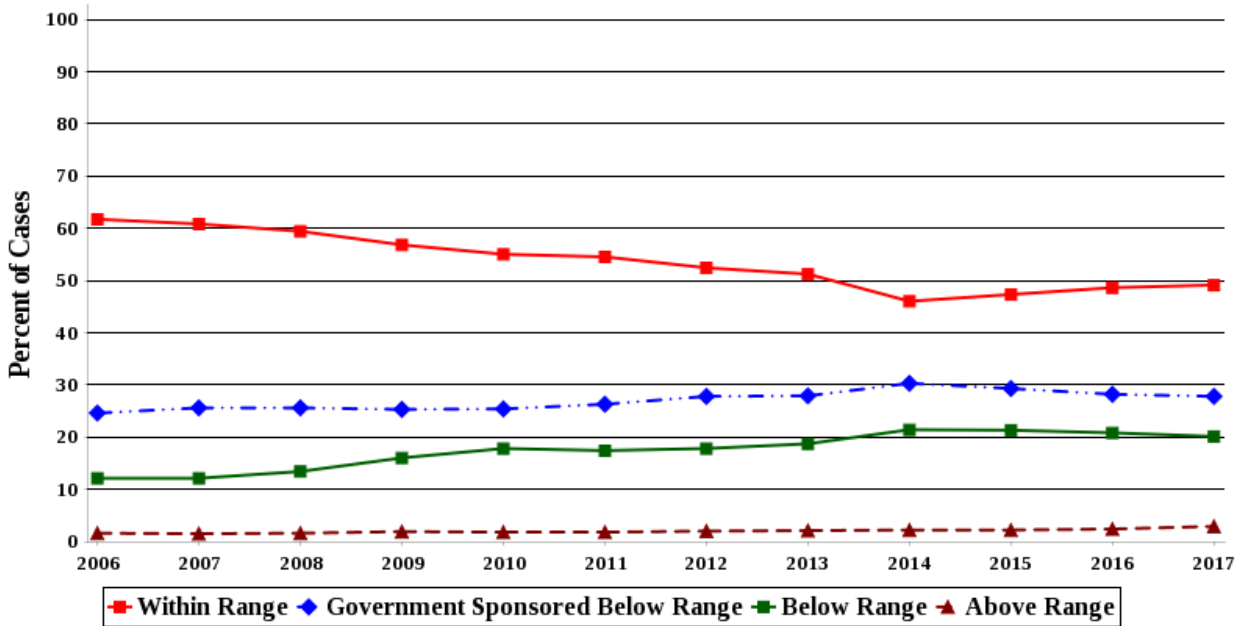
California North



¹ Descriptions of variables used in this figure are provided in [Appendix A](#).

SOURCE: This was produced using the U.S. Sentencing Commission's Interactive Sourcebook (<https://isb.uscc.gov>) using the Commission's fiscal year 2006-2017 Datafiles, USSCFY2006-USSCFY2017.

SENTENCES RELATIVE TO THE GUIDELINE RANGE OVER TIME (4 CATEGORIES)¹
Fiscal Years: 2006-2017



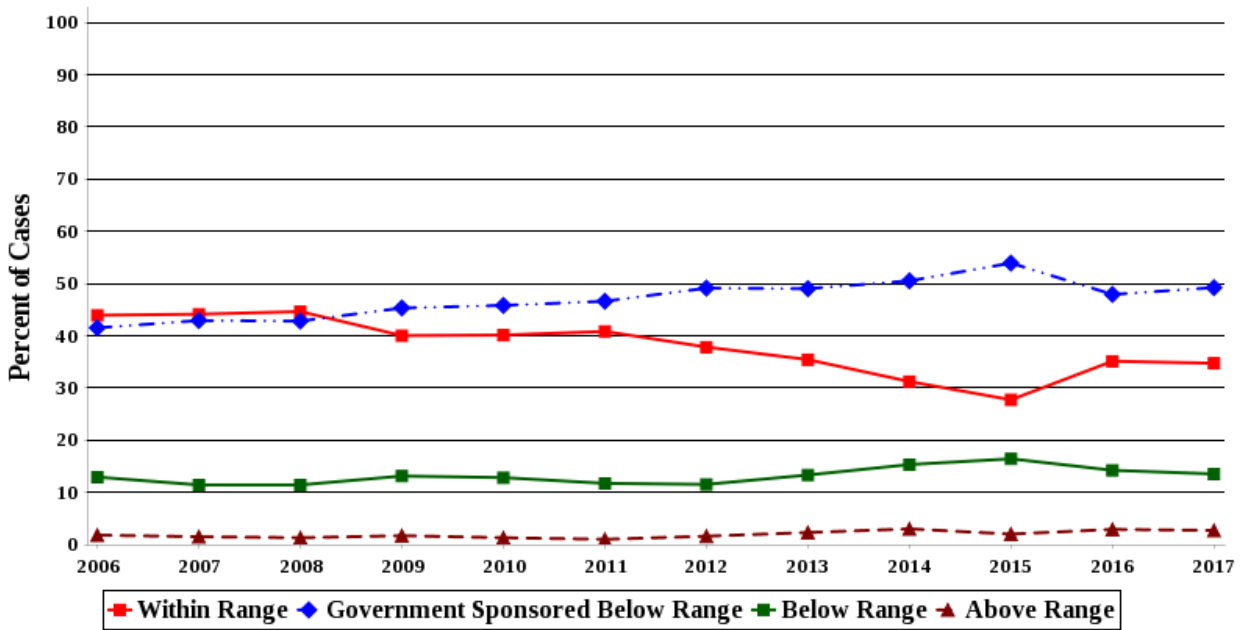
¹ Descriptions of variables used in this figure are provided in [Appendix A](#).

SOURCE: This was produced using the U.S. Sentencing Commission's Interactive Sourcebook (<https://isb.uscc.gov>) using the Commission's fiscal year 2006-2017 Datafiles, USSCFY2006-USSCFY2017.

SENTENCES RELATIVE TO THE GUIDELINE RANGE OVER TIME (4 CATEGORIES)¹

Fiscal Years: 2006-2017

9th Circuit



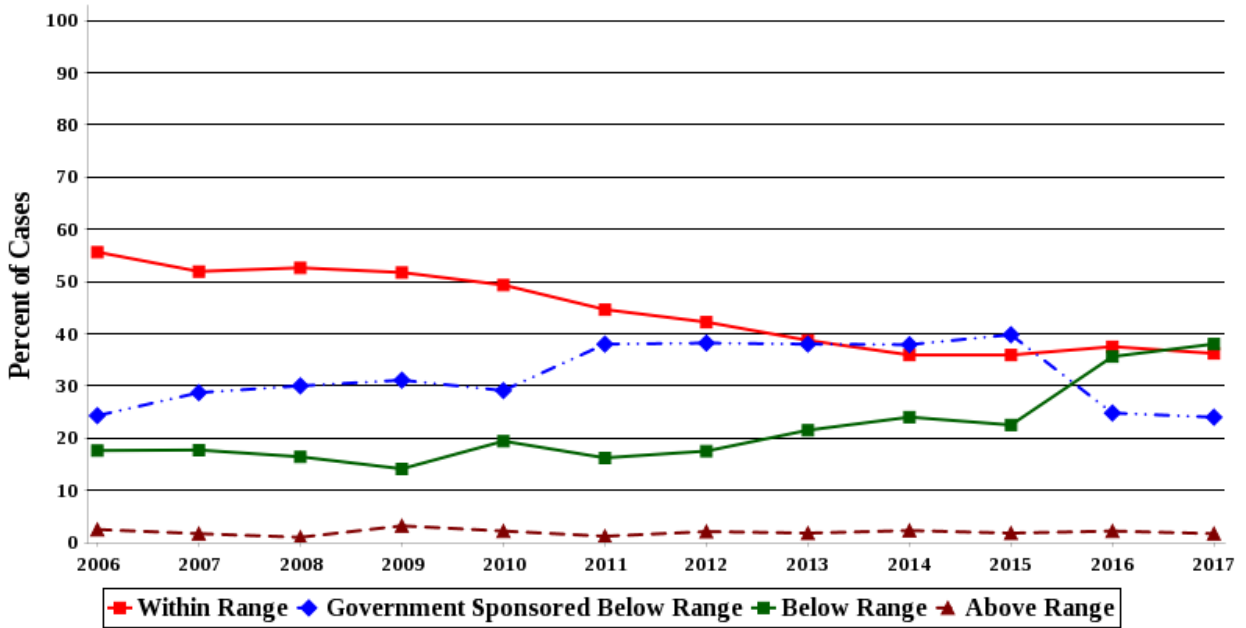
¹ Descriptions of variables used in this figure are provided in [Appendix A](#).

SOURCE: This was produced using the U.S. Sentencing Commission's Interactive Sourcebook (<https://isb.ussc.gov>) using the Commission's fiscal year 2006-2017 Datafiles, USSCFY2006-USSCFY2017.

SENTENCES RELATIVE TO THE GUIDELINE RANGE OVER TIME (4 CATEGORIES)¹

Fiscal Years: 2006-2017

California North

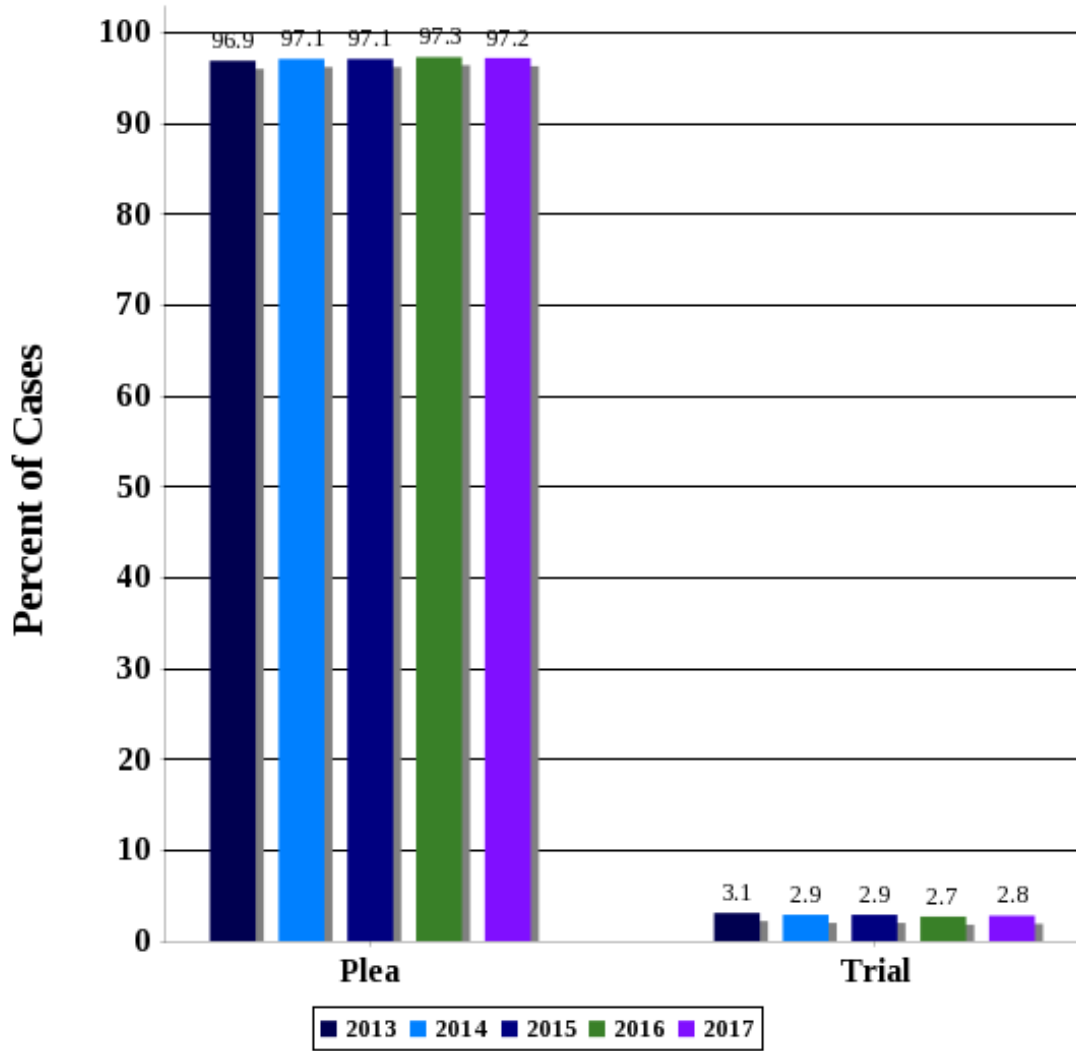


¹ Descriptions of variables used in this figure are provided in [Appendix A](#).

SOURCE: This was produced using the U.S. Sentencing Commission's Interactive Sourcebook (<https://isb.ussc.gov>) using the Commission's fiscal year 2006-2017 Datafiles, USSCFY2006-USSCFY2017.

GUILTY PLEAS AND TRIAL RATES¹

Fiscal Years: 2013-2017



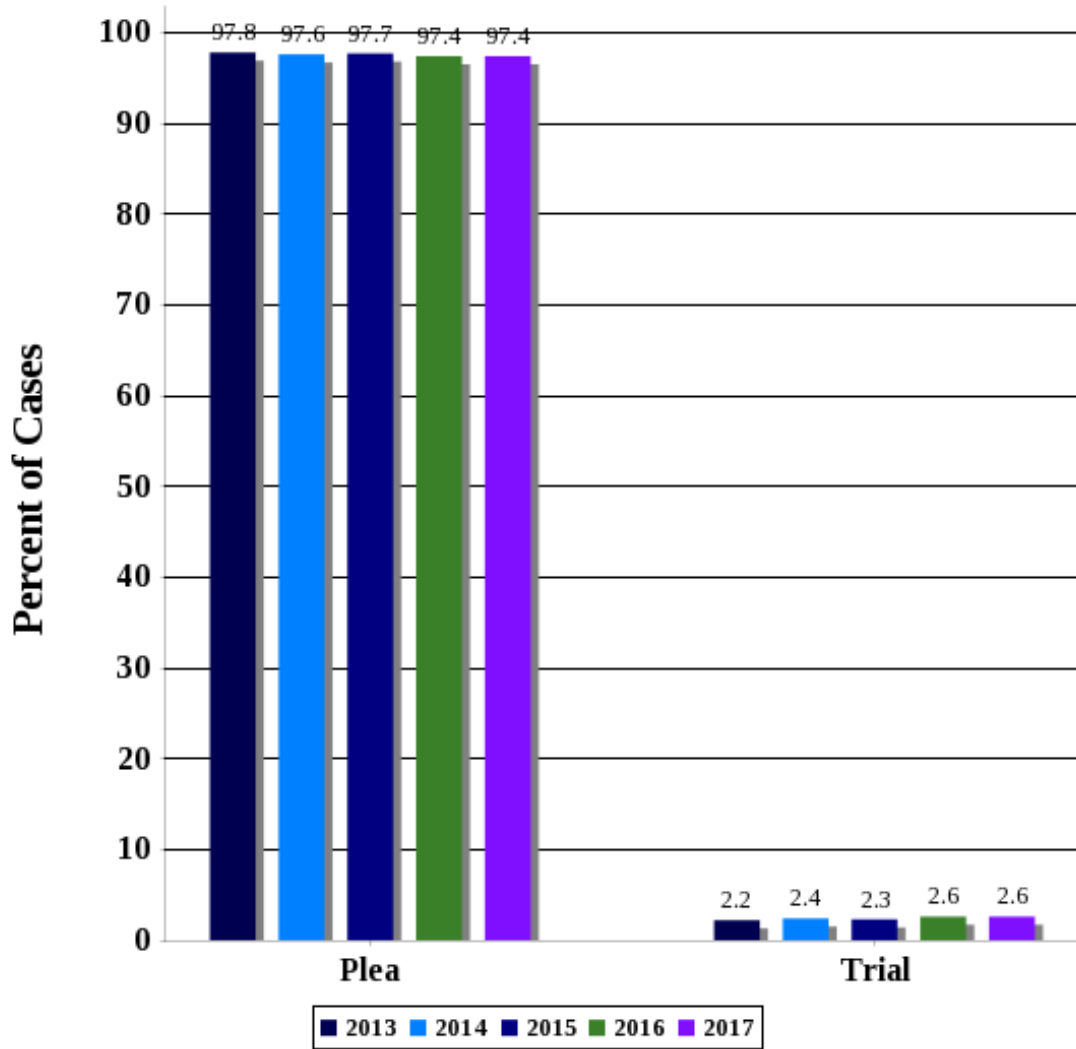
¹Descriptions of variables used in this figure are provided in [Appendix A](#).

SOURCE: This was produced using the U.S. Sentencing Commission's Interactive Sourcebook (<https://isb.uscc.gov>) using the Commission's fiscal year 2013-2017 Datafiles, USSCFY2013-USSCFY2017.

GUILTY PLEAS AND TRIAL RATES¹

Fiscal Years: 2013-2017

9th Circuit



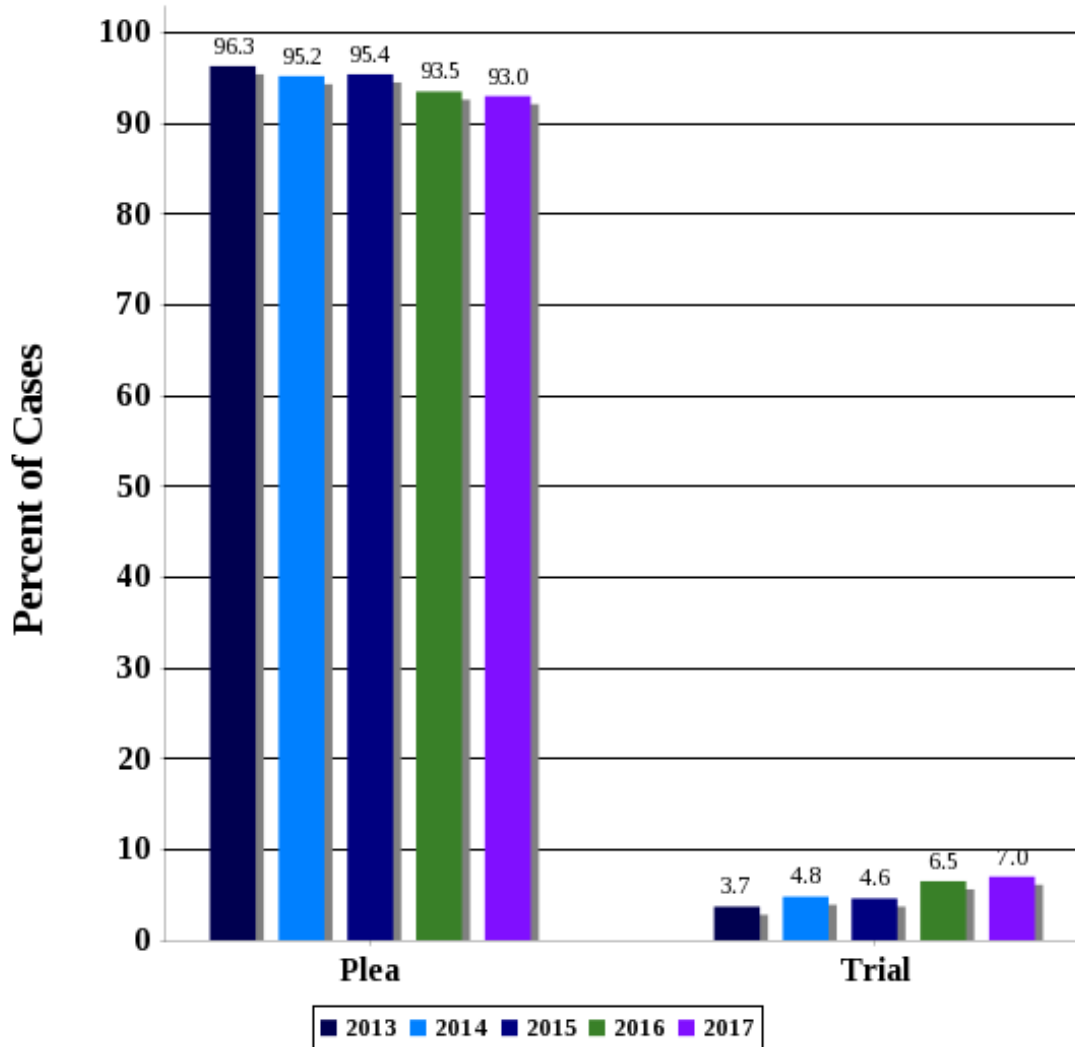
¹Descriptions of variables used in this figure are provided in [Appendix A](#).

SOURCE: This was produced using the U.S. Sentencing Commission's Interactive Sourcebook (<https://isb.uscc.gov>) using the Commission's fiscal year 2013-2017 Datafiles, USSCFY2013-USSCFY2017.

GUILTY PLEAS AND TRIAL RATES¹

Fiscal Years: 2013-2017

California North



¹Descriptions of variables used in this figure are provided in [Appendix A](#).

SOURCE: This was produced using the U.S. Sentencing Commission's Interactive Sourcebook (<https://isb.uscc.gov>) using the Commission's fiscal year 2013-2017 Datafiles, USSCFY2013-USSCFY2017.